

**HASPI Lab 20 Station 5: Embryos**  
Cut out each embryo on the dotted line



[http://www.0095.info/de/index\\_thesende3\\_biologiede\\_biogenetischesgrundgesetz.html](http://www.0095.info/de/index_thesende3_biologiede_biogenetischesgrundgesetz.html)

*Early Development*  
**Chicken**

Early Development  
**Snake**

Early Development  
**Salmon**

Mid Development  
**Chicken**

Mid Development  
**Snake**

Mid Development  
**Salmon**

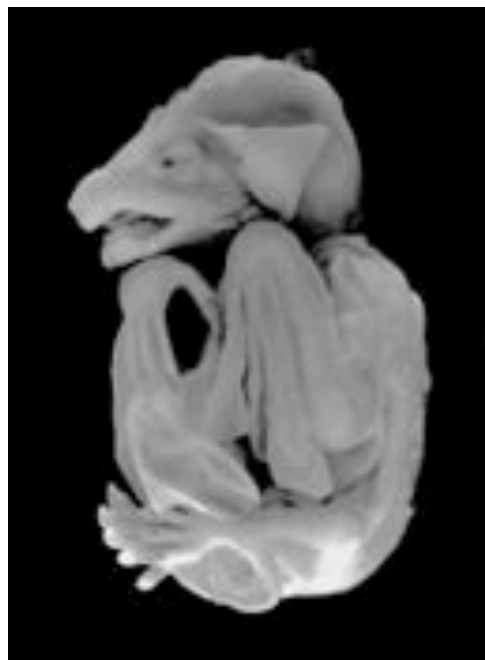
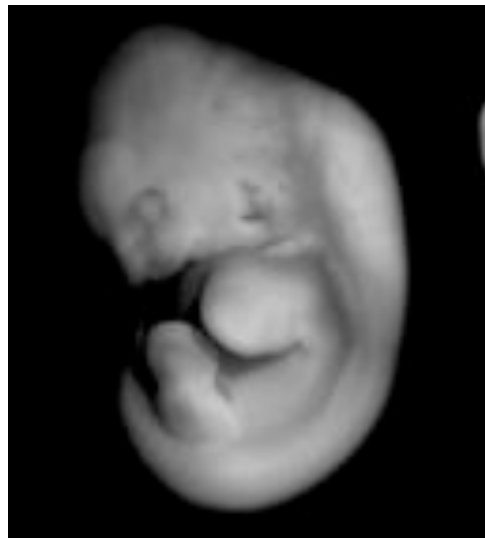
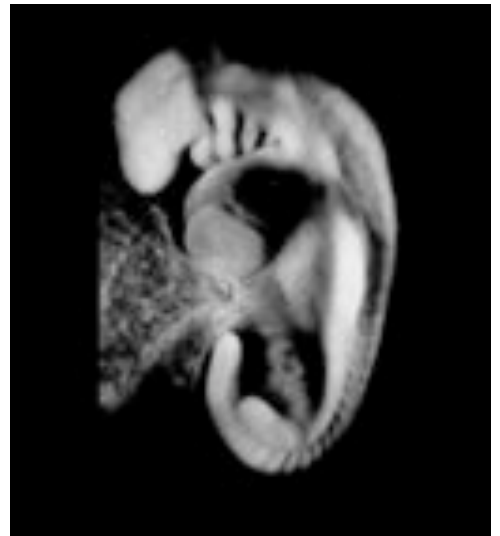
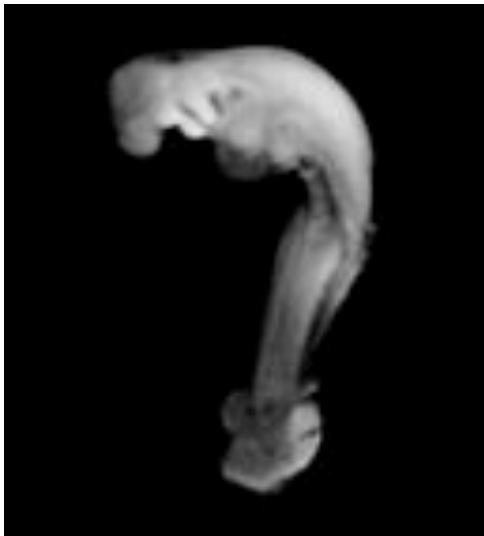
Late Development  
**Chicken**

Late Development  
**Snake**

Late Development  
**Salmon**

# Embryos

Cut out each embryo on the dotted line



[http://www.0095.info/de/index\\_thesende3\\_biologiede\\_biogenetischesgrundgesetz.html](http://www.0095.info/de/index_thesende3_biologiede_biogenetischesgrundgesetz.html)

*Early Development*  
**Human**

Early Development  
**Bat**

Early Development  
**Cat**

Mid Development  
**Human**

Mid Development  
**Bat**

Mid Development  
**Cat**

Late Development  
**Human**

Late Development  
**Bat**

Late Development  
**Cat**

**Salmon**

**Snake**

**Chicken**

**Human**

**Bat**

**Cat**

**EARLY** Development

**MID** Development

**LATE** Development

